

**Portland Metro Preliminary
Travel Impacts
2019p**

February 2020

Prepared for

Travel Portland

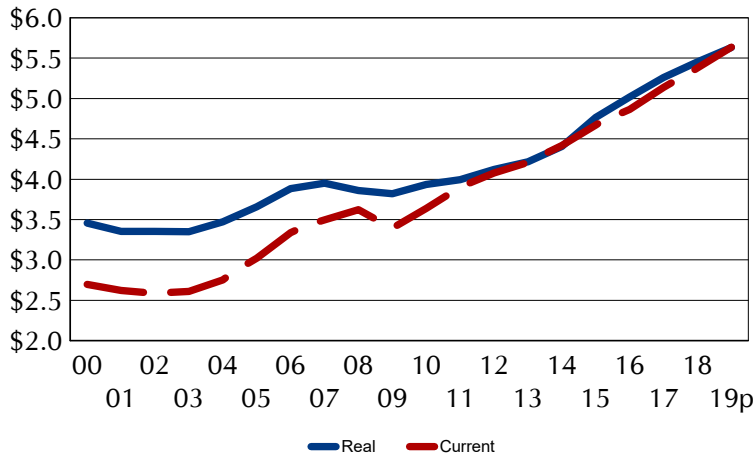
Portland Metro Preliminary Travel Impacts, 2000-2019p

(West) Clackamas, (West) Multnomah, Columbia, & Washington Counties

	Spending (\$Million)	Earnings (\$Million)	Employment (Jobs)	Local & State Tax Receipts		
				Local (\$Million)	State (\$Million)	Total (\$Million)
2000	2,698	677	26,010	45,087	56,822	101,909
2001	2,621	677	26,150	46,237	56,925	103,162
2002	2,584	662	25,640	48,356	55,496	103,851
2003	2,609	644	24,920	48,889	55,010	103,899
2004	2,752	652	25,010	50,984	59,455	110,439
2005	3,023	695	25,740	56,108	63,178	119,285
2006	3,339	747	26,840	62,461	67,830	130,291
2007	3,496	799	27,940	69,306	71,900	141,207
2008	3,621	813	28,700	71,799	73,946	145,745
2009	3,391	772	26,750	68,290	68,756	137,046
2010	3,639	808	26,700	67,237	72,286	139,523
2011	3,899	882	28,560	76,214	83,523	159,737
2012	4,076	931	29,400	82,159	86,887	169,046
2013	4,204	967	30,340	94,900	89,662	184,562
2014	4,418	1,039	31,490	104,389	93,543	197,932
2015	4,672	1,134	32,830	121,625	100,362	221,987
2016	4,867	1,239	34,510	125,176	111,298	236,474
2017	5,139	1,353	35,290	133,825	125,011	258,835
2018	5,373	1,458	36,220	137,236	132,126	269,362
2019p	5,633	1,570	36,930	138,905	138,863	277,768
<i>Annual Percentage Change</i>						
18-19p	4.8%	7.6%	2.0%	1.2%	5.1%	3.1%
00-19p	3.9%	4.5%	1.9%	6.1%	4.8%	5.4%

Note: Details may not add to totals due to rounding. All estimates reported here are subject to revision as more complete source data for 2019 becomes available.

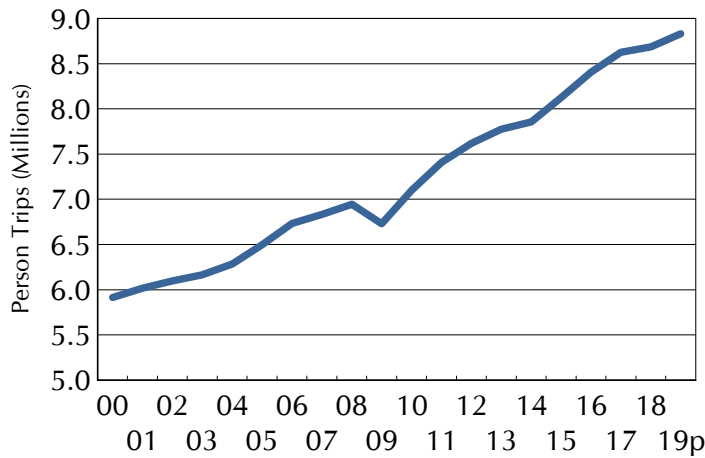
Travel Spending (Millions)



Travel spending in the Portland Metro area increased by 4.8 percent in current dollars and 3.2 percent in real dollars (adjusted for inflation).

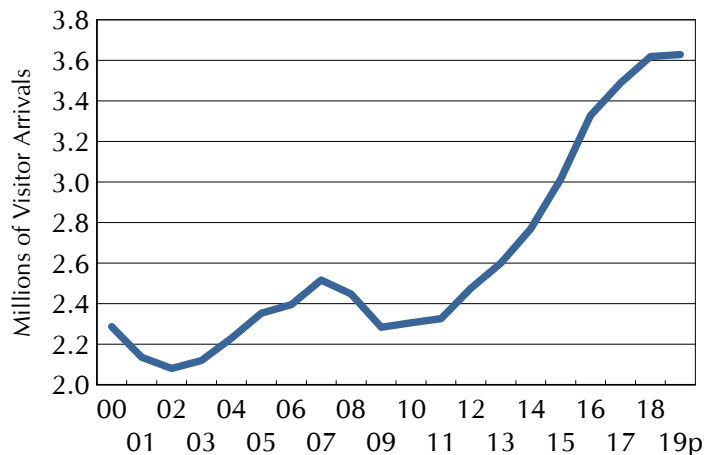
Sources: Bureau of Labor Statistics CPI, STR Inc., Energy Information Administration and Bureau of Transportation Origin and Destination Survey.

Overnight Person-Trips



Overnight person-trips (8.83 million in 2019p) increased by 1.6 percent.

Visitor Air Arrivals (Millions)



There were 3.6 million visitors that traveled to PDX on domestic airlines in 2019p. Visitors arriving by air shows flat growth compared to 2018.

Source: Bureau of Transportation Origin and Destination Survey, T100 Domestic Market, Dean Runyan Associates

Average Expenditures for Overnight and Day Visitors, 2019p
by Type of Accomodation and Mode of Transportation

	Travel Party		Person		Party Size	Length of Stay (days)
	Day	Trip	Day	Trip		
Hotel, Motel, STVR*						
All Modes	\$514	\$1,265	\$244	\$587	2.1	2.5
Air	\$522	\$1,598	\$283	\$865	1.8	3.1
Ground	\$506	\$1,030	\$213	\$434	2.4	2.0
Private Home						
All Modes	\$125	\$469	\$64	\$234	2.0	3.7
Air	\$132	\$728	\$75	\$415	1.8	5.5
Ground	\$77	\$229	\$36	\$108	2.1	3.0
Other Overnight						
All Modes	\$124	\$495	\$41	\$162	3.0	4.0
Day						
All Modes	\$207	\$207	\$147	\$147	1.4	1.0

Overnight and Day Visitor Volume, 2017-2019p

	Person-Nights (Million)			Party-Nights (Million)		
	2017	2018	2019	2017	2018	2019
Hotel, Motel, STVR*	9.8	9.9	10.2	4.7	4.7	4.8
Private Home	15.8	15.8	16.0	8.1	8.1	8.2
Other Overnight	0.8	0.8	0.8	0.3	0.3	0.3
All Overnight	26.4	26.6	27.0	13.0	13.1	13.3
Day	3.8	3.8	3.8	2.7	2.7	2.7

	Person-Trips (Million)			Party-Trips (Million)		
	2017	2018	2019	2017	2018	2019
Hotel, Motel, STVR*	4.1	4.1	4.2	1.9	1.9	2.0
Private Home	4.3	4.3	4.4	2.2	2.2	2.2
Other Overnight	0.2	0.2	0.2	0.1	0.1	0.1
All Overnight	8.6	8.7	8.8	4.1	4.2	4.2
Day	3.8	3.8	3.8	2.7	2.7	2.7

*Hotel, Motel, STVR (Short Term Vacation Rental) include all lodging subject to lodging tax.